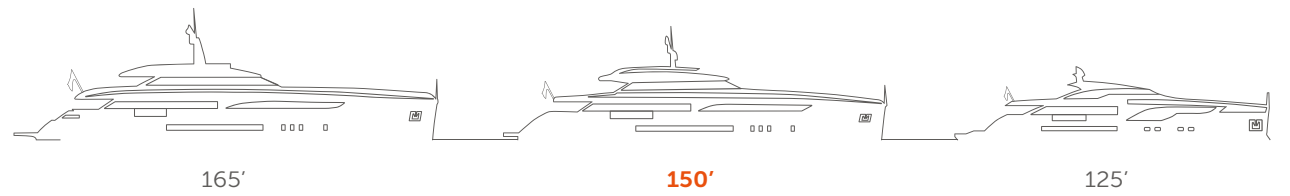


WIPACER

NEVER ENOUGH

SUPERYACHT
DIVISION

150



165'

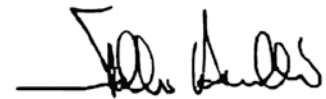
150'

125'

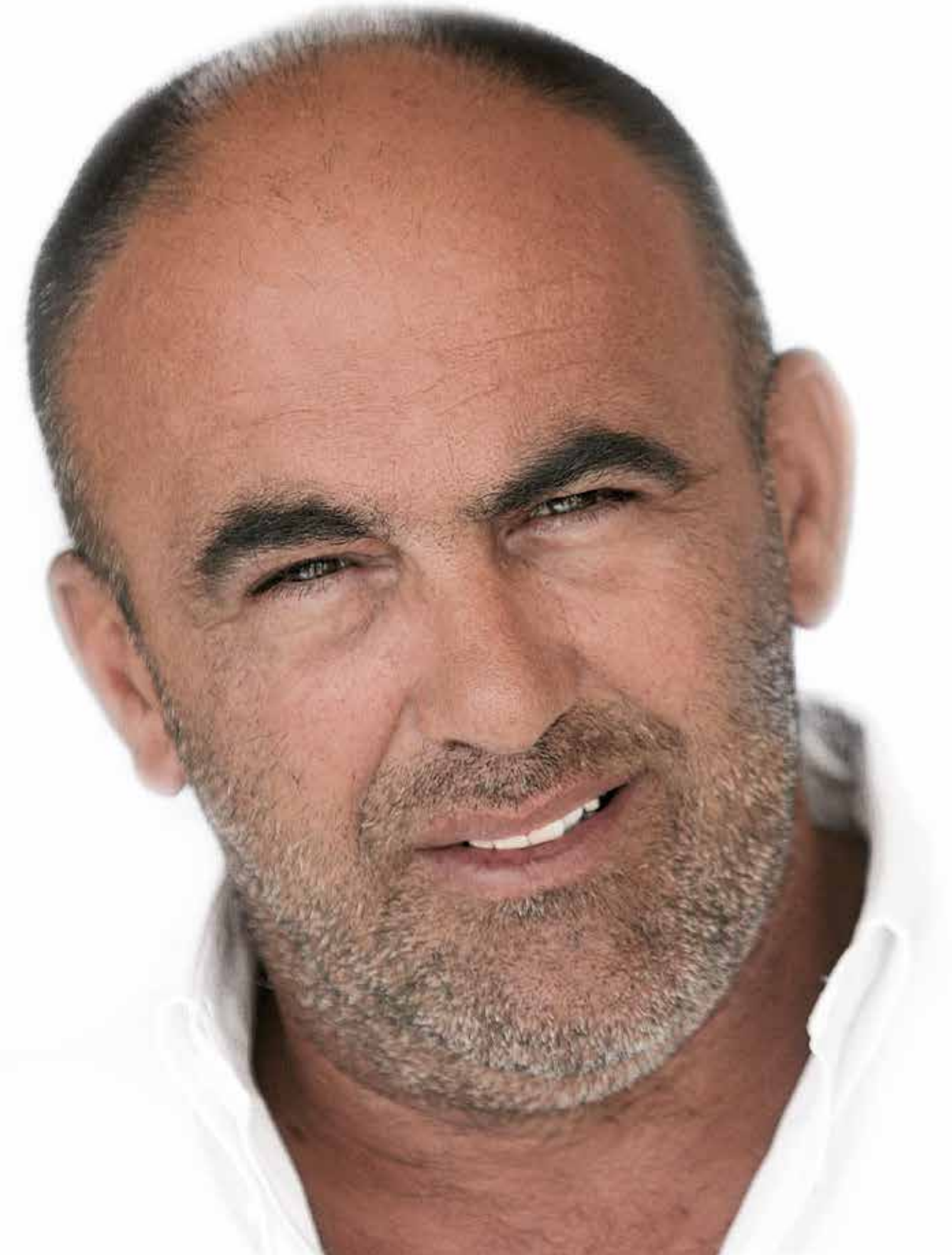
SUPERYACHT
DIVISION

EVERYTHING STARTS HERE

"I've never enjoyed sitting still, or simply standing by. Making do doesn't come naturally to me either. Pushing the boundaries and shooting for the stars, that's what I enjoy. No blinkers, no exceptions – just open-mindedness and a desire to build the very best for our clients."



Tilli Antonelli, founder and CEO of WIDER



WIDER 150

G E N E S I

Constructed entirely in aluminium, the elegant silhouette of the WIDER 150 was created by Fulvio De Simoni in collaboration with Tilli Antonelli and the in-house WIDER design team. Conceived to enhance the owner's contact with the sea, she also provides significantly more interior space than other superyachts of a similar length and is unique in her ability to offer a number of luxury features only usually found on a larger vessel.



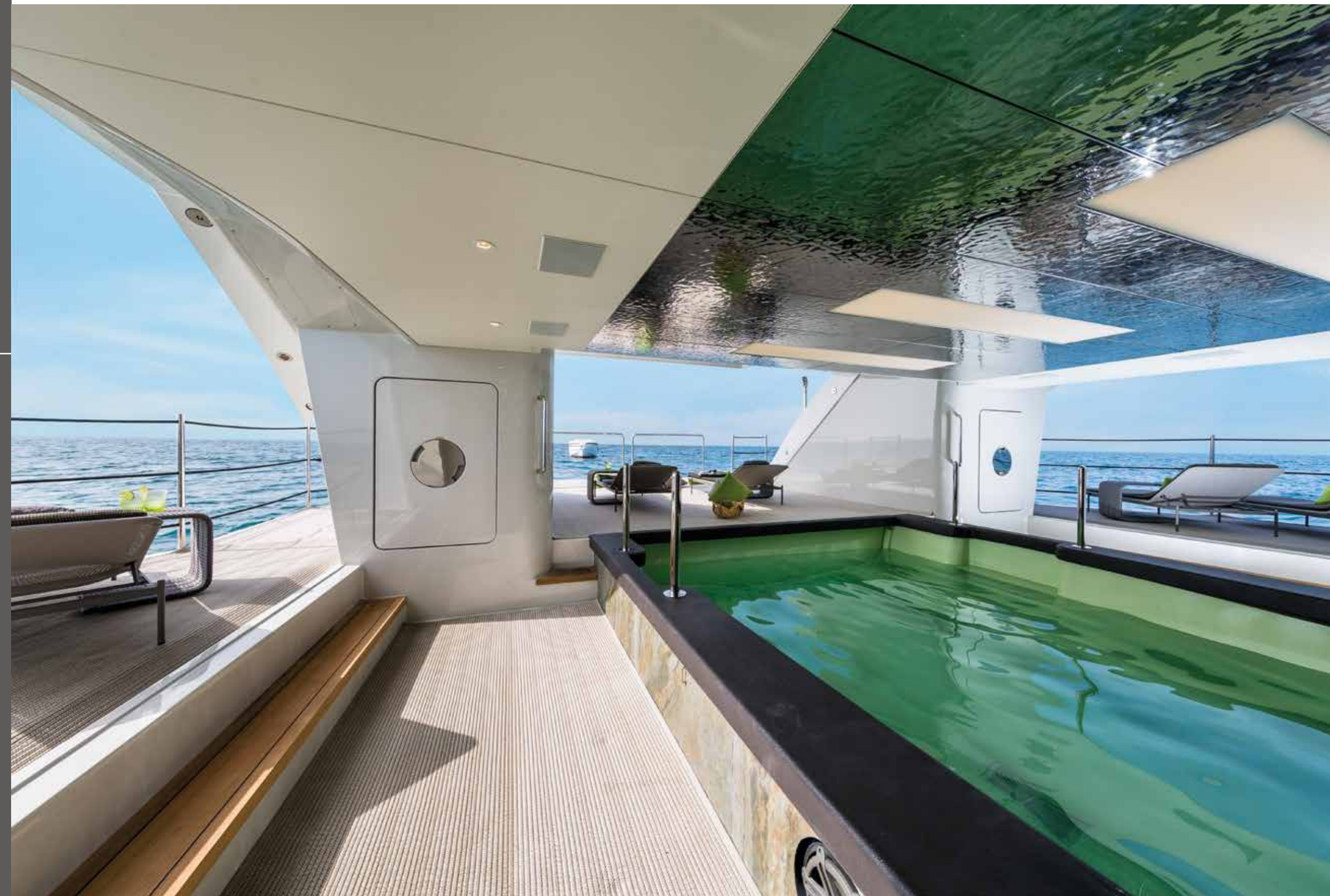






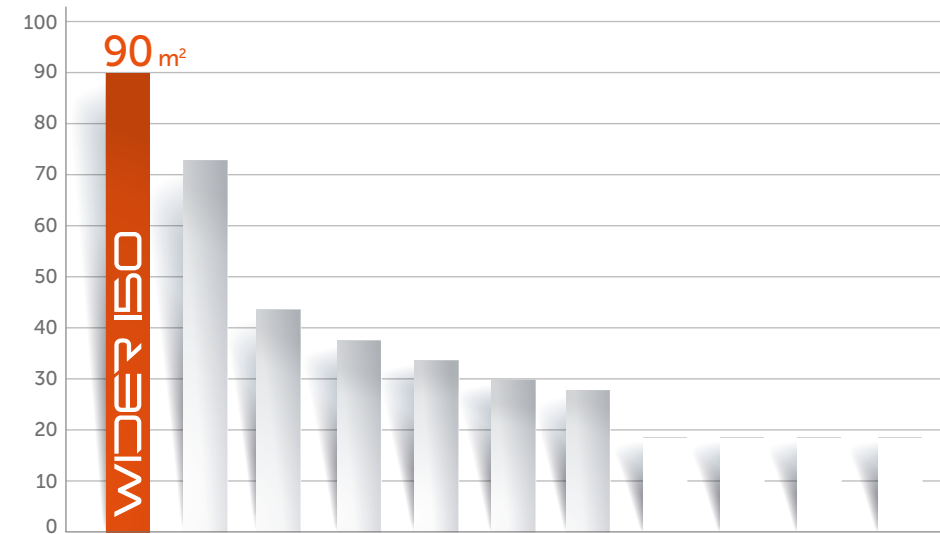
PLENTIFUL PLEASURES

Enhancing enjoyment of the marine environment – this is the fundamental driving force behind all WIDER designs. The WIDER 150 boasts more than 350m² of external areas, offering numerous relaxation venues in direct connection to the sea, for the owner and guests to enjoy. Most notable is the spectacular beach club – a 90m² leisure space right on the water – with a 7m seawater swimming pool. Both the pool and the size of the beach club are unique among yachts of this length.





BEACH CLUB ON A WIDER SCALE



AREA COMPARISON

Graph above compares beach club **area in m²** on ten yachts that are direct competitors to the WIDER 150. All of these are displacement vessels and range in size from 44-47m.

The WIDER 150's generous beach club provides 90m² of relaxation space right on the water, more than 20% bigger than the closest competitor.

Source: WIDER in-house team







32' TENDER

Thanks to its floating launching system, the stern of the WIDER 150 can be converted into a spacious garage ideal for carrying the WIDER 32. The beach club's seawater pool opens up at the transom to allow the tender to be driven in. This system makes entry and exit manoeuvres considerably easier for the crew.



SEAWATER POOL



SUN DECK



A large sun deck fitted with a full bar, barbecue and spa, makes the ideal spot to entertain guests or sunbathe while enjoying 360° views.



FOREDECK LOUNGE



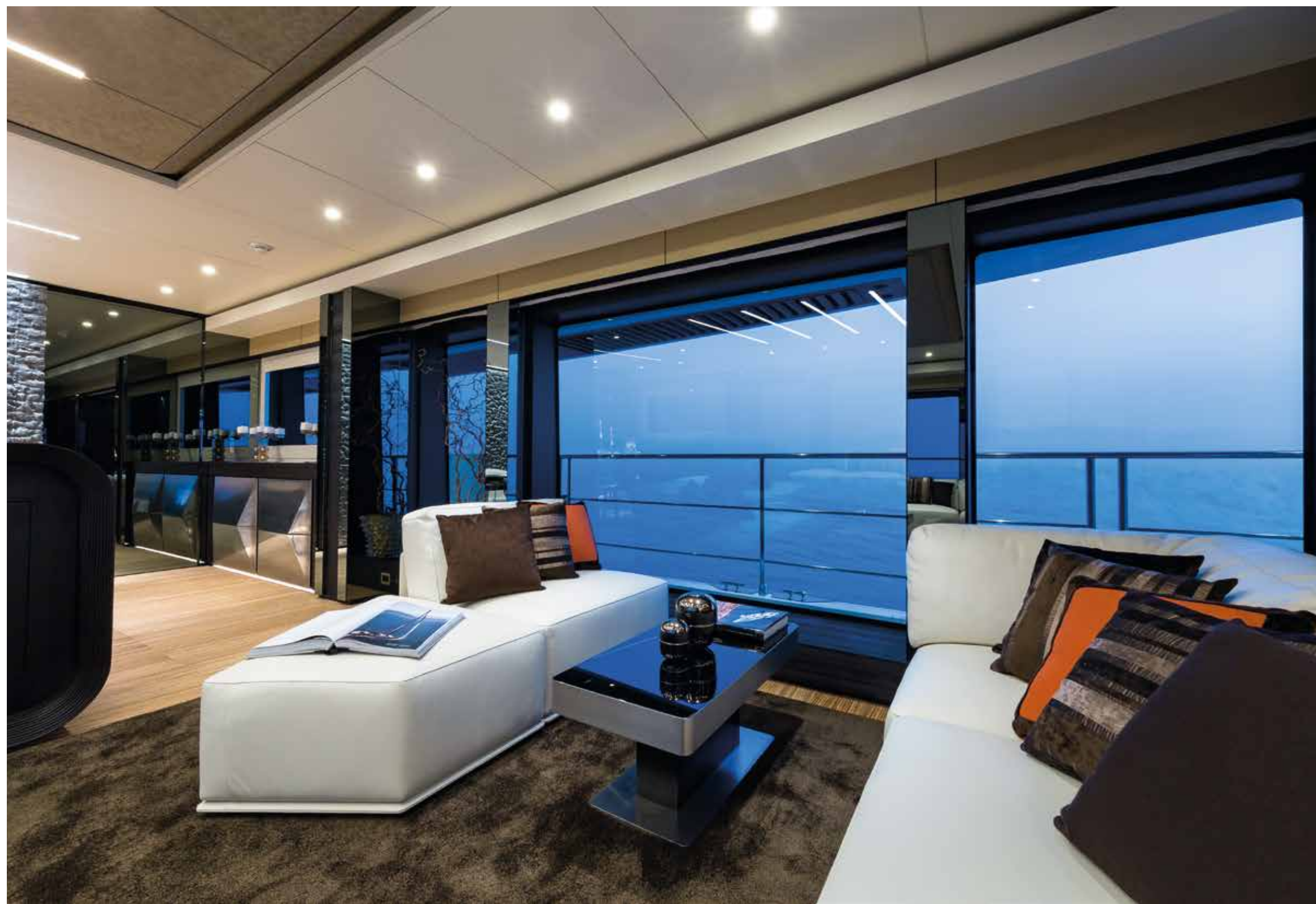
In front of the wheelhouse, is a concealed foredeck lounge, hidden beneath a hatch on the forward coachroof. The hatch raises to reveal a spacious entertaining area – perfect as an additional and very private relaxation space.

FOREVER ENTERTAINING

Large floor-to-ceiling windows run throughout the main lounge area, allowing sunlight to flood in and provide panoramic views of the sea. The upper deck features a saloon and dining area with sliding doors to the outside that can be hidden from view allowing for an indoor-outdoor dining experience.







MAIN DECK AFT



Light, open living spaces – perfect to entertain guests or simply unwind. The sky lounge includes electrically-operated glass doors, offering flexibility and a genuine indoor-outdoor experience.



SKY LOUNGE



UPPER DECK AFT



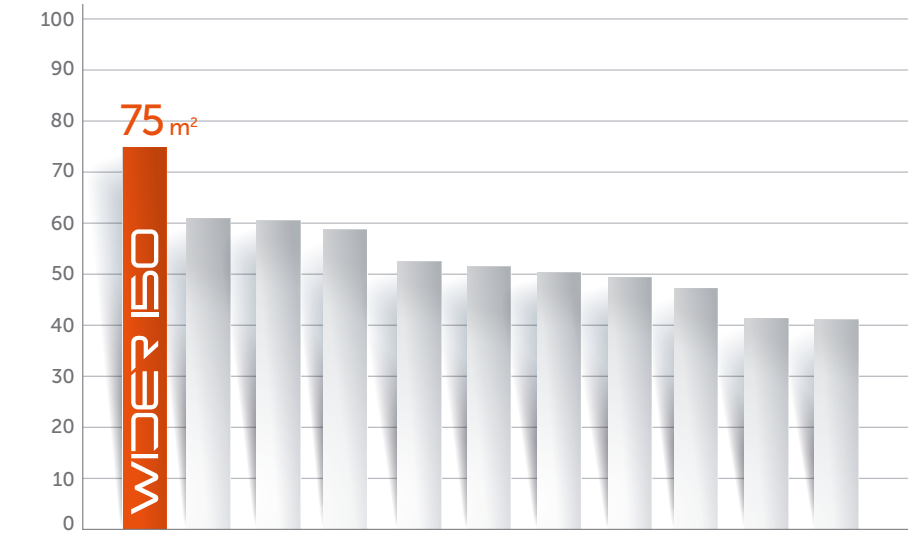
HOME AWAY FROM HOME

The WIDER 150 offers all of the comforts you demand at home while at sea. The full beam owner's suite includes a study, walk-in wardrobe for him and her as well as a bathroom with 3m shower and bath. And the custom-designed, push-button sea terrace offers a truly unique position to enjoy breakfast or early evening drinks in complete privacy. The guest accommodation is equally generous, meaning the WIDER 150 is as well suited for charter as for the owner's friends.





OWNER'S APARTMENT



AREA COMPARISON

Graph above compares owner's state room **area in m²** on ten yachts that are direct competitors to the WIDER 150. All are displacement vessels and range in size from 44-47m. Calculations include all areas within owner cabin, owner study, en-suite bathroom and sea terrace, if available.

The WIDER 150's class-leading Owner's apartment provides 23% more space than her closest competitor.

Source: WIDER in-house team





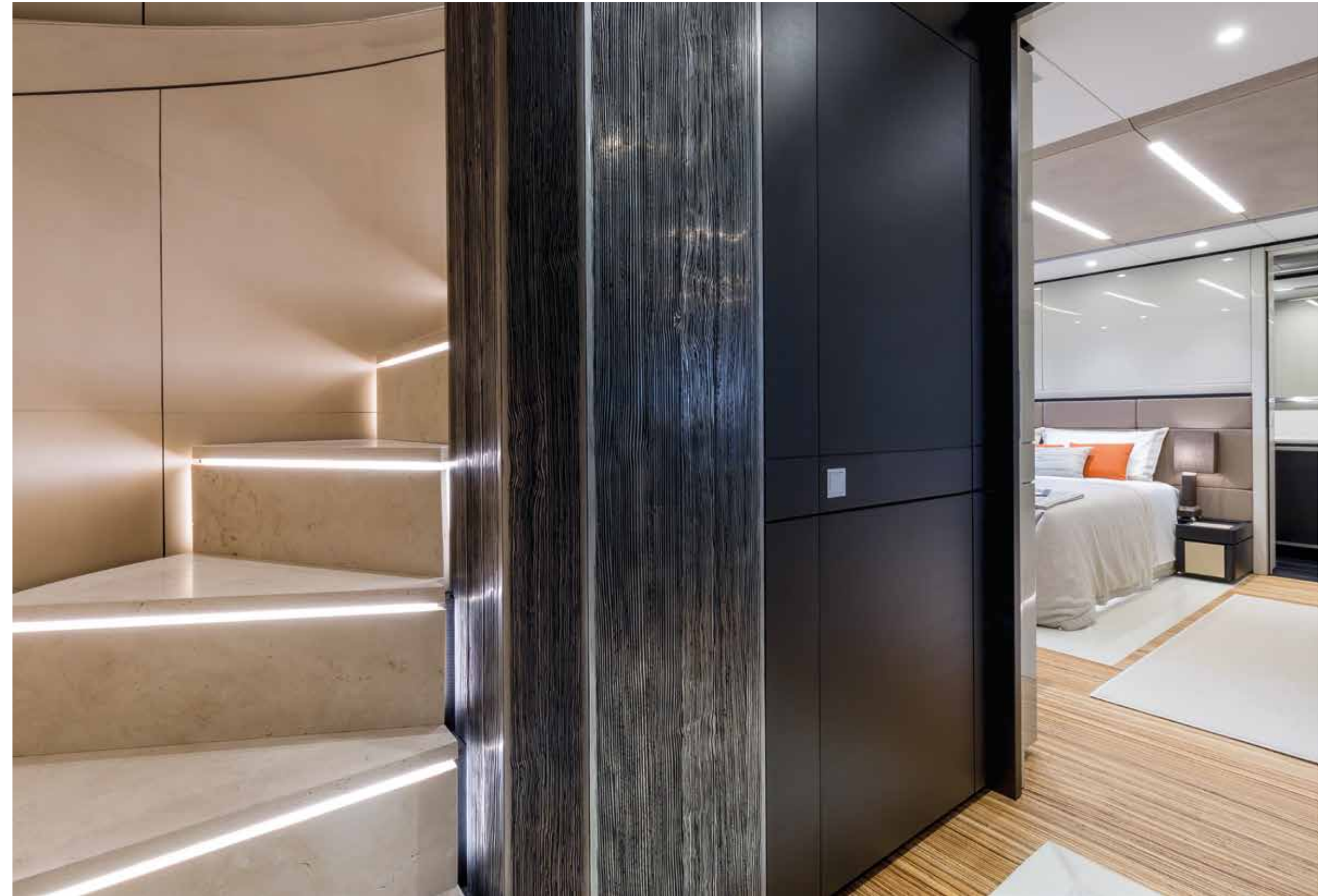
OWNER'S BATHROOM







GUEST CABIN



Guest cabin beds slide apart so they can be set up as either twin or king-size, offering greater flexibility.

HI-TECH COMMAND STATION

Excellent visibility and total comfort in this state-of-the-art, bridge station. This area includes a captain's cabin and en-suite bathroom, as well as easy and discreet access for crew.

When not in use, the bridge station closes at the push of a button to offer an uncluttered space. Even the captain's chair slides discreetly away beneath the controls.





SMART OWNERSHIP

The WIDER 150 is powered by a diesel electric propulsion system. This reduces consumption considerably, while at the same time facilitating unprecedented range.

The traditional engine room has been replaced by two separate units: a power generator room in the bow and a technical room in the stern. This leaves the central heart of the vessel free for larger, more comfortable guest cabins located in the most stable part of the yacht.

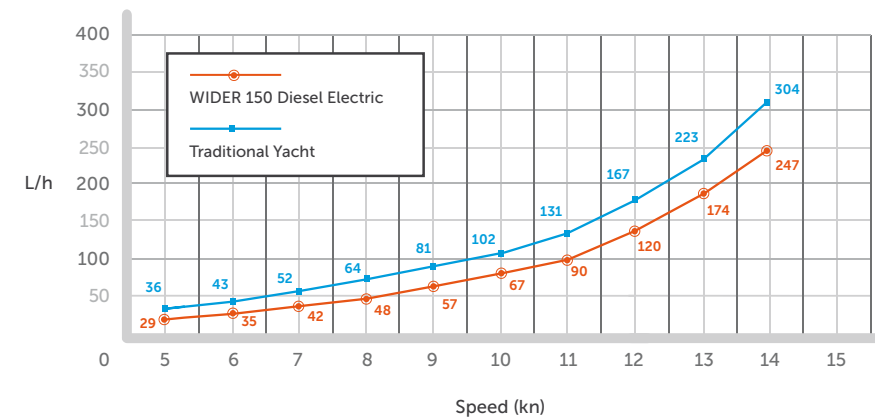


DIESEL ELECTRIC PROPULSION

FUEL EFFICIENCY MEANING EXTENDED CRUISING RANGE

Four inline variable speed diesel generators, combined with the state-of-the-art WIDER Power Management System and the latest battery technology, serve the hotel and propulsion requirements of the vessel. This system optimizes the use of one or more generators producing just as much power as is necessary at any given time; no more, no less. This results in greater efficiency from the engines, less consumption and therefore extended cruising range.

TRADITIONAL YACHT (*) VS WIDER 150 DIESEL ELECTRIC SPEED VS CONSUMPTION



(*) Traditional Yacht with standard twin screw propulsion
Note: above values refer to consumption for propulsion only

REDUCED NOISE AND VIBRATION

A significant additional benefit to the greater efficiency achieved through the use of the variable speed generators and azimuthal pods is significantly lower noise and vibration than compared to a traditional propulsion system. This results in greater enjoyment on board, the basis of the WIDER philosophy to yachting.



SHALLOW DRAFT – 2,2m

The propellers on the pods are protected by the lowest point of the boat, the central skeg, just over 2m beneath the waterline. The use of pods, as well as the efficiently designed hull, have allowed for a draft which is a class leader within the competitive set. The advantage of shallow draft is that it allows access to more bathing sites and beaches.



PROPULSION PARTNERS



Emerson is a Fortune 500 company and world leader in technology and engineering, providing products, solutions and services that drive industrial automation production to greater heights. Emerson Industrial Automation, an Emerson Business Unit, were instrumental in the development of the WIDER Power Management System.



ESTechnologies are at the forefront of active battery management technology. This system prevents overcharging by continuously balancing the energy in the cells, ensuring longer life expectancy, and is better for the environment than conventional – mostly passive – systems. Launched in 2009, ESTechnologies have supplied batteries to some of the leading shipyards in Holland as well as all of the lithium-polymer batteries on board the WIDER Superyacht range.



Visedo are an award-winning, hi-tech Finnish company that design and produce components tailored to the marine industry. Visedo supply the permanent magnet electric motors that power the azimuthal pods and the alternators on all four generators.



Established in the Netherlands in 1951, Veth Propulsion is a leader in innovation, quality, flexibility and speed, employing 150 people. Veth Propulsion is an international manufacturer of main and auxiliary propulsion machinery for ships and yachts. The azimuthal pods on board all of the WIDER Superyacht range are supplied by Veth Propulsion.



ZERO EMISSION MODE

The propulsion system is completely modular, so the WIDER 150 can cruise using only the battery packs, in ZEM (Zero Emission Mode), or with up to four inline diesel generators. The latest technology in lithium-polymer batteries allow the yacht to cruise, moor or rest at anchor completely under electric power. The 544kWh capacity is sufficient for an overnight stay or for bathing at anchor in total silence, devoid of any exhaust fumes and the associated smell, while enjoying all the pleasures on board. Alternatively, the vessel can cruise for 6 hours at 5kn under battery power alone.

INCREASED RELIABILITY AND LESS MAINTENANCE

Electric motors have less moving parts than combustion engines, and therefore have less possible points of failure, resulting in greater reliability. An additional benefit of this is that standard maintenance is reduced.

GREATER FLEXIBILITY

The use of azimuthal pods means the engine room no longer needs to be in the mid ship, as in traditional twin-screw configurations. Power generation is located in the bow – an area less desirable for accommodation – resulting in space gained amidships that is to the benefit of the owner and his guests. A flexible cable delivers electricity produced in the bow, via the Power Management System to the azimuthal pods that propel the vessel.



WIDER 150

TECHNICAL DATA

April 2016
Not binding

Construction


A displacement yacht built in aluminium alloy 5083, with bulbous bow.

MAIN CHARACTERISTICS

General

Builder	WIDER, Ancona (Italy)
Length (L.O.A.)	47,05m (154' 2")
Beam	8,6m (28' 3")
Draft (Half Load)	2,2m (7' 3")
Hull and Superstructure	Aluminium 5083
Gross Tonnage	484GT
Displacement fully laden	391t
Exterior Designer	Fulvio De Simoni
Interior Designer	Ideaetalia - BB/DESIGN
Naval Architect	WIDER Engineering Sydac

Classification

RINA - C  Hull • Mach Ych Unrestricted Navigation, EFP, AUTO-UMS, (Y), CONF (Y). LY3

Tank capacities

Fuel	45 000L (11 888 U.S. gal)
Water	12 000L (3 170 U.S. gal)

Speed/Range

The values below are based on total fuel consumption for service, propulsion and hotel systems.

Maximum speed	14,1kn	Range: 2 000nm
Cruising speed	13kn	Range: 2 500nm
Ecological speed	10kn	Range: 4 700nm
ZEM speed	5kn	Range: Up to 30nm

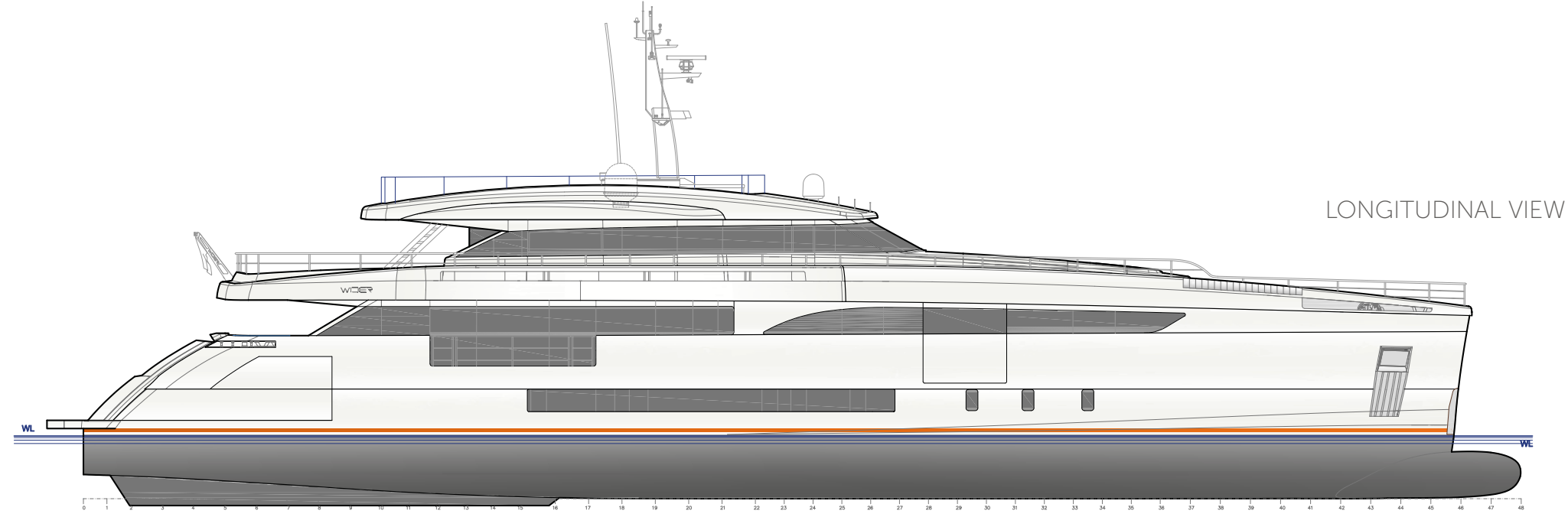
Electric propulsion

Electric motors	2x 531kW
Gen Set	4x 350kW
Battery pack	544kWh

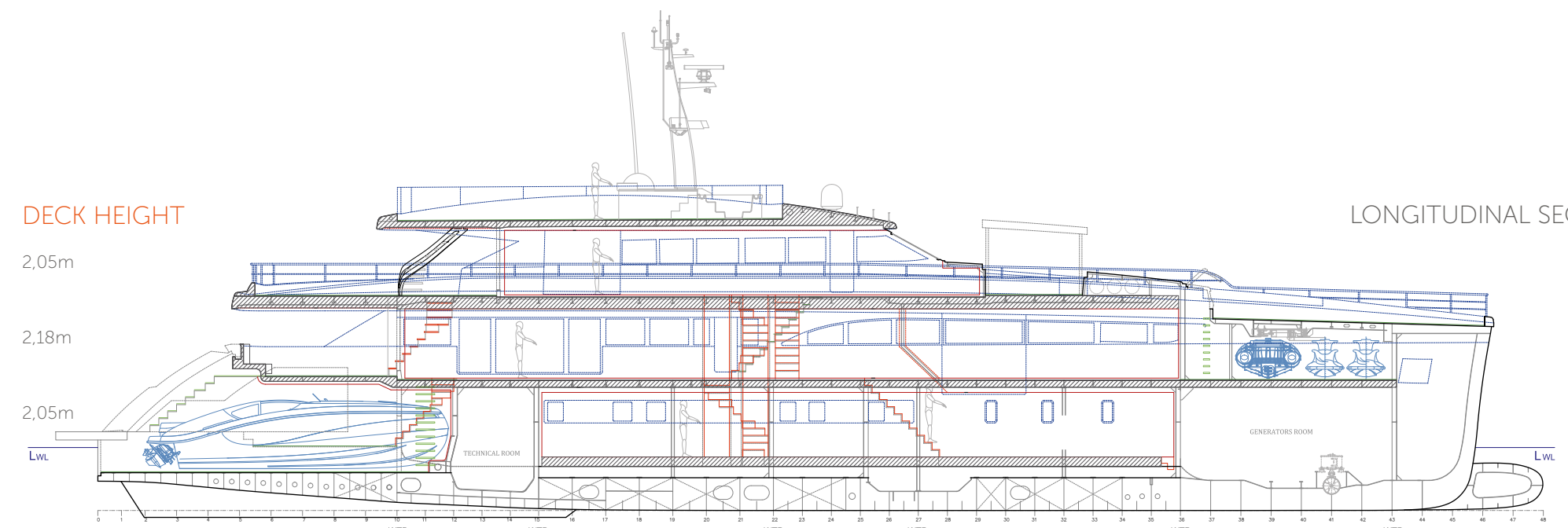
Accommodation

10 + 1 guests accommodated in 5 cabins

9 crew total, accommodated in 4 cabins + Captain's cabin

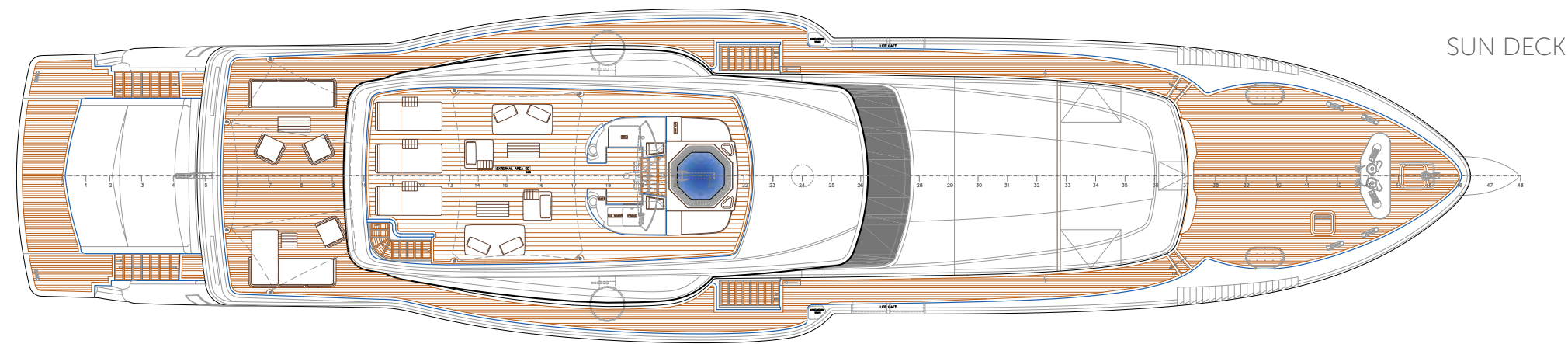


LONGITUDINAL VIEW

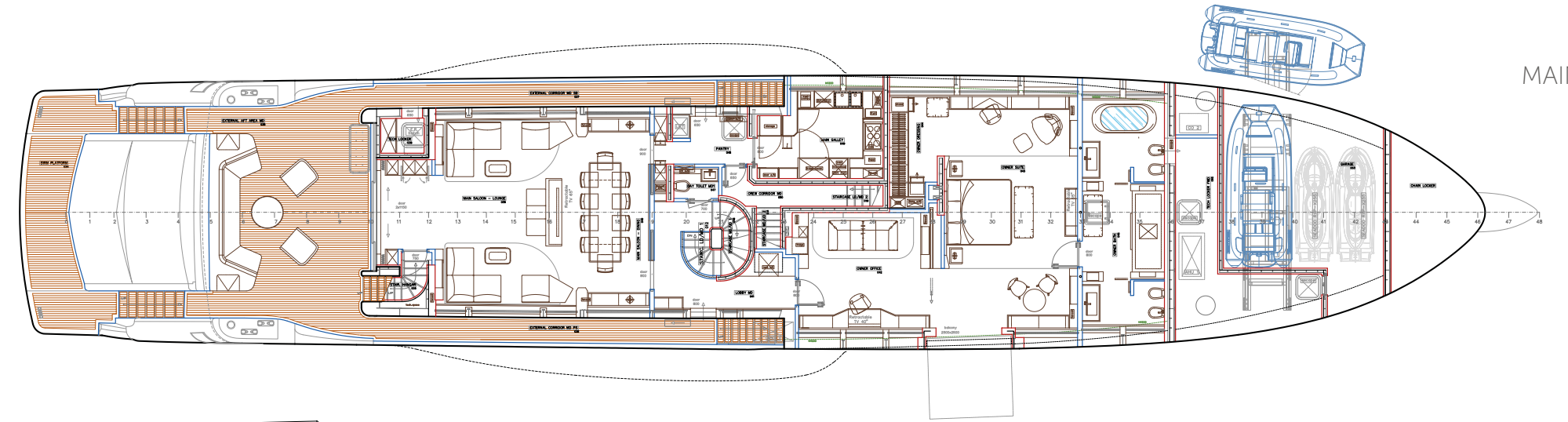


DECK HEIGHT

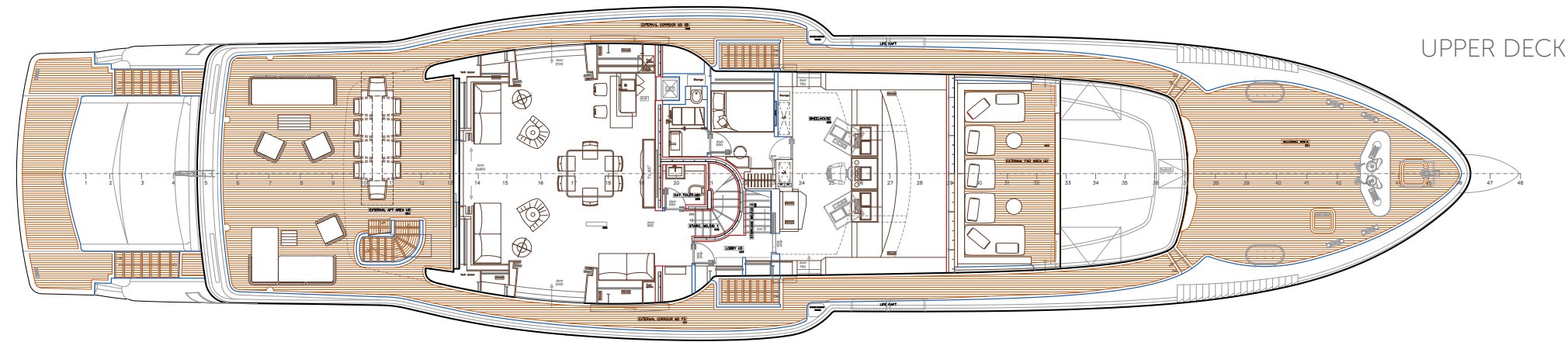
LONGITUDINAL SECTION



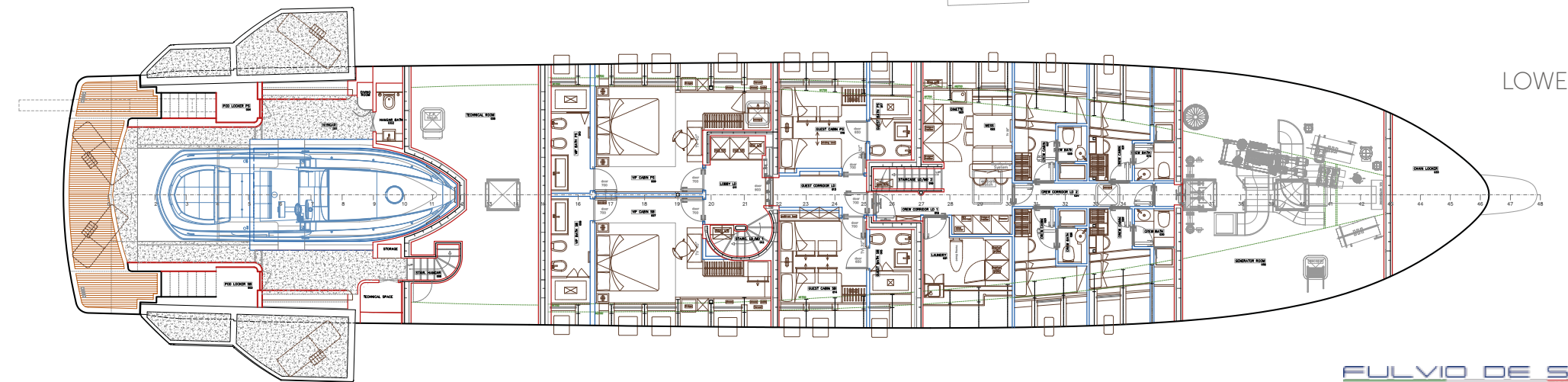
SUN DECK



MAIN DECK



UPPER DECK



LOWER DECK

SHIPYARDS & PRODUCTION

WIDER's two production facilities are located in Marche, on the Adriatic Coast, an area steeped in nautical heritage with a wealth of skilled boatbuilders and specialist craftsmen. WIDER Express Cruisers are constructed at our 10,000m² site in Castelvecchio di Monte Porzio (PU) and WIDER Superyachts are built at our 2,500m² waterside shipyard in Ancona.



PURE ITALIAN CREATION ●○●

Based in Italy, WIDER has access to some of the finest designers, craftsmen and suppliers in the yachting industry. With meticulous, some might say obsessive, attention to detail we continuously strive to source the finest designs and materials to include on our range of yachts.

There is a good reason why more yachts are built in Italy every year than anywhere else in the world. We do it better.

Pure Italian Creation is our interpretation of "Made in Italy".



WIDER 165 PROJECT "CECILIA", DELIVERY SPRING 2017

SPECIAL THANKS TO



robertaebasta®

"Ideas are just a starting point. As we know, the majority of these go no further than the concept stage. The transformation from idea to reality has required the time, effort and hard work of more than 300 people. I want to personally thank everyone who trusted and participated with us during the realisation of this exciting project. And more to come."

A handwritten signature in black ink, appearing to read "Tilli Antonelli".

Tilli Antonelli, founder and CEO of WIDER

May 2016

Concept and design: AdmCom
Photography: Jeff Brown/Breed Media, Alberto Cocchi, Moowe

This brochure has been prepared for general marketing purposes. The information contained in this brochure (including any information concerning the dimensions, capabilities and performance characteristics of the subject yachts) is given in good faith but is not warranted to be accurate and may also include optional accessories which are not part of the standard equipment. All such information is subject to change at any time without notice. Wider Srl gives no warranty or representation, nor shall it be liable, in contract, tort or any other way, for any claims relating to or arising from any use made of any such information. All intellectual property rights of whatsoever nature and howsoever arising in this brochure belong to Wider Srl without whose prior written consent this brochure may not be copied, adapted, distributed, published, displayed, communicated to the public or otherwise used in any way in whole or in part anywhere in the world.

